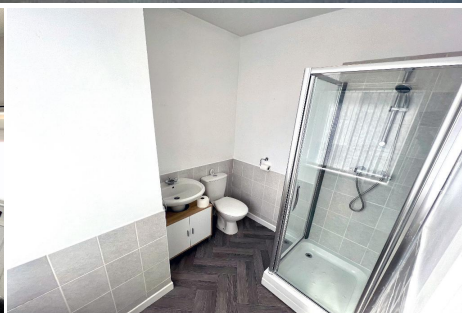


1 Bedroom Ground Floor apartment for Rent - £625 per month

Wood Street, Elton, Bury, BL8 2QX



KEY FEATURES

- GROUND FLOOR FLAT • IN GOOD CONDITION THROUGHOUT • ONE DOUBLE BEDROOM • OPEN PLAN LIVING/DINING AND KITCHEN • EN SUITE BATHROOM • GAS CENTRAL HEATING/DOUBLE GLAZING • POPULAR AND CONVENIENT LOCATION • PRIVATE ENCLOSED REAR PATIO GARDEN • AVAILABLE FOR IMMEDIATE TENANCY

Description

**** A GROUND FLOOR APARTMENT IN GOOD CONDITION. AVAILABLE FOR IMMEDIATE TENANCY ****

We are pleased to offer for let, this ground floor one bed roomed flat, maintained to a good standard throughout.

Offering ideal living accommodation for a single person or couple, the property is located on the popular Wood Street with many local amenities close by and within walking distance of Bury Town centre.

With gas fired central heating and double glazing, the accommodation comprises of lounge with feature fireplace leading to open plan fitted kitchen and dining area. There is a good sized double bedroom with en suite three piece shower room.

The property has the additional benefit of a private enclosed rear yard, currently utilised as a patio garden.

The property is available for immediate viewing and occupation.

PLEASE NOTE: A holding deposit equivalent to one weeks rent is payable for this property. This will be deducted off the first months rent.

A deposit equivalent to five weeks rent is payable and protected within the DPS deposit scheme.

Viewing is strictly by appointment through our offices on 01204 88 2368.

Energy Efficiency

Energy Efficiency Rating			
Score	Energy rating	Current	Potential
92+	A		
81-91	B		
69-80	C		75 C
55-68	D	66 D	
39-54	E		
21-38	F		
1-20	G		

