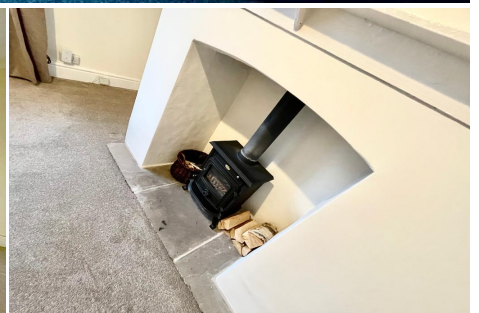
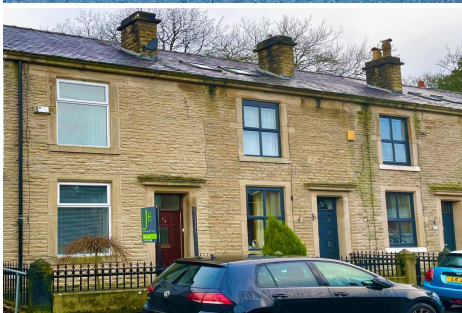


2 Bedroom Stone built terrace for Rent - £750 per month

Royds Street, Tottington, Bury, BL8 3NH



KEY FEATURES

- FANTASTIC MID STONE TERRACED PROPERTY • TWO DOUBLE BEDROOMS • LARGE MODERN DINING KITCHEN
- INTEGRAL APPLIANCES • WOOD BURNER TO LOUNGE • FITTED ROBES TO MAIN BEDROOM • GAS CENTRAL HEATING/DOUBLE GLAZING • PATIO GARDEN TO REAR • QUALITY FITTED MAIN BATHROOM • AVAILABLE FOR IMMEDIATE VIEWING

Description

**** A FABULOUS PROPERTY NEW TO THE RENTAL MARKET! STONE BUILT MID TERRACE PROPERTY IN GREAT CONDITION THROUGHOUT ****

We are delighted to be able to offer new to the rental market, this very well presented mid stone terraced property with a great location in the heart of Tottington.

The property, renovated throughout, offers modern, well designed and well proportioned living accommodation with the benefit of integral appliances to the kitchen, a newly fitted boiler and log burning feature fireplace to the lounge.

Comprising of entrance porch, lounge, large modern high gloss dining kitchen with fitted appliances, two double bedrooms (main fitted with a range of wardrobes) and three piece bathroom suite with double walk-in shower unit. Outside, the property has a patio garden to the rear including shed with power and to the front a small enclosed flagged area.

The property is available for immediate viewing and occupation.

PLEASE NOTE: A holding deposit equivalent to one weeks rents is payable for this property (deducted from first months rent).

We are sorry but no pets are permitted at the property.

Energy Efficiency

Energy Efficiency Rating			
Score	Energy rating	Current	Potential
92+	A		
81-91	B		87 B
69-80	C		
55-68	D	67 D	
39-54	E		
21-38	F		
1-20	G		



