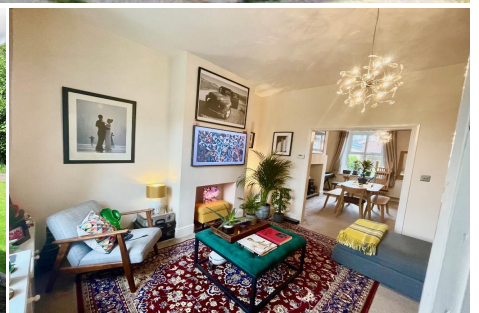


2 Bedroom Stone built terrace for Rent - £795 per month

Old Doctors Street, Tottington, Lancashire, BL8 3ND



KEY FEATURES

- MID STONE TERRACED PROPERTY • GREAT LOCATION IN TOTTINGTON • TWO RECEPTION ROOMS • MODERN FITTED KITCHEN • TWO GOOD SIZED BEDROOMS • OVERLOOKING FIELDS TO FRONT • GAS CENTRAL HEATING • DOUBLE GLAZING • AVAILABLE 03/12/2022 • INTEREST NOW BEING TAKEN

Description

**** A STONE BUILT MID TERRACE PROPERTY PRESENTED TO A GOOD STANDARD THROUGHOUT IN A GREAT LOCATION IN TOTTINGTON ****

JH Sales and Lettings are delighted to offer for let this well presented, two bedroomed mid stone terraced property located a short walk from Tottington Centre. Located in a quiet private road, the property has views over open fields to the front.

Benefiting from gas fired central heating and double glazing, the accommodation briefly comprises of entrance porch, lounge, second reception room, fully fitted modern kitchen with appliances, two bedrooms and main, four piece family bathroom. Outside, the property has a small garden to the front with open views and an enclosed yard to the rear.

The property is available for occupation from the beginning of December 2022. Please enquire at our offices to arrange a viewing.

Please note: A holding deposit equivalent to one weeks rent will be payable for this property (deducted from first months rent).

Energy Efficiency

Energy Efficiency Rating			
Score	Energy rating	Current	Potential
92+	A		
81-91	B		
69-80	C		79 C
55-68	D	61 D	
39-54	E		
21-38	F		
1-20	G		



