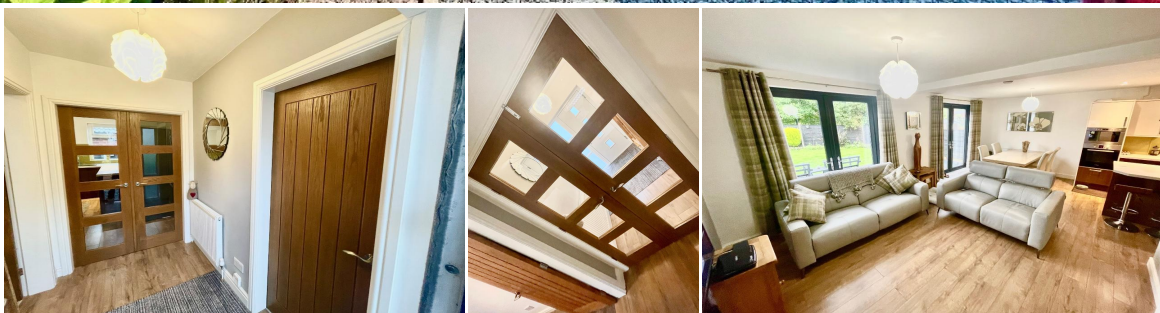


3 Bedroom Detached true bungalow for Rent - £1,250 per month

Delph Lane, Ainsworth, BL2 5PP



KEY FEATURES

- DETACHED TRUE BUNGALOW • FANTASTIC ACCOMMODATION • RECENTLY RENOVATED • PRESENTED TO AN EXCEPTIONAL STANDARD • THREE BEDROOMS • OPEN PLAN LIVING/DINING/KITCHEN • FITTED WARDROBES • MODERN FOUR PIECE BATHROOM SUITE • ENCLOSED PRIVATE GARDENS WITH PATIO • GAS CENTRAL HEATING/DOUBLE GLAZING

Description

**** A RECENTLY RENOVATED AND IMMACULATELY PRESENTED DETACHED TRUE BUNGALOW IN AINSWORTH VILLAGE ****

New to the rental market, we are delighted to receive instructions to let this detached true bungalow. Recently renovated throughout and providing modern open plan flexible living, the property is immaculately presented with attention to detail throughout.

Located on quiet cul-de-sac in the heart of Ainsworth Village with access to local amenities, countryside walks and local pubs and restaurants, internally the property offers entrance hallway, open plan living/dining and kitchen space with modern fitted high gloss kitchen incorporating island with dedicated space for white goods, two sets of patio doors lead to the private rear garden area with decked patio, three bedrooms (fitted robes to two) and main four piece bathroom suite with walk-in shower.

The property has a driveway for two cars to the front. The private rear garden offers the 'wow' factor with large decked patio area, and laid to lawn area with bush borders. A fantastic spot to enjoy outdoor living!

The property is available for immediate viewing and tenancy is available to commence on the 1st December 2021.

A new Energy Performance Certificate is currently being prepared for the property. Viewing is strictly by appointment with our offices.

PLEASE NOTE: A holding deposit equivalent to one weeks rent is payable for this property (deducted from first months rent). Please enquire at our offices for further details.



