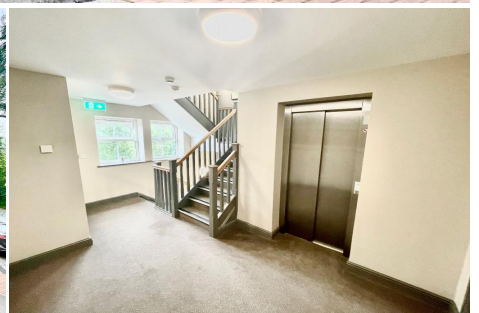
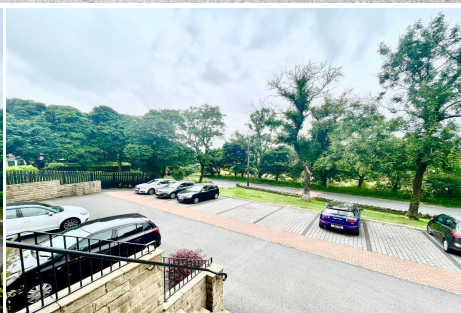


2 Bedroom Apartment for Rent - £795 per month

Wadhams Court, Turton, Bolton, Lancashire, BL7 0JF



KEY FEATURES

- COUNTRYSIDE LOCATION • FANTASTIC TRANSPORT LINKS • TWO PARKING SPACES • GAS CENTRAL HEATING • INTEGRATED WHITE GOODS • HIGH QUALITY FINISH • NATURAL MATERIALS • GREAT VIEWS OF SURROUNDING AREA • LIFT ACCESS • VIEWING STRICTLY BY APPOINTMENT

Description

**** A TRULY SUPERB FIRST FLOOR APARTMENT
LOCATED IN TURTON, ADJACENT TO OPEN
COUNTRYSIDE WITH FANTASTIC VIEWS ****

JH Sales and Lettings are delighted to offer for let this superb first floor apartment and former show home located in the heart of the popular area of Turton surrounded by local countryside with fantastic views.

An immaculate modern interior with a natural finish, the property has the benefit of gas fired central heating, double glazing, pre-wired for satellite and has an intercom security system.

The accommodation comprises of entrance hallway, lounge, fully fitted dining kitchen with a full range of high gloss wall and base units and a full range of integral appliances including dishwasher. The property benefits from two double bedrooms with the main having a range of fitted wardrobes and is finished with a modern bathroom presented to a high standard.

Located within the Turton area adjacent to beautiful countryside and fantastic transport links, viewing is highly recommended to appreciate the size and quality of the accommodation on offer. Please contact our Tottington office for further details.

The property has an EPC Rating of B.
The property has a Council Tax Band of B.

A holding deposit equivalent to one weeks rent is payable for this property (deducted from first months rent).

A deposit equivalent to five weeks rent is payable.

Energy Efficiency

Energy Efficiency Rating			
Score	Energy rating	Current	Potential
92+	A		
81-91	B	84 B	84 B
69-80	C		
55-68	D		
39-54	E		
21-38	F		
1-20	G		

