

2 Bedroom Semi-Detached for Rent - £900 per month

Bury Road, Tottington, Bury, BL8 3DT



KEY FEATURES

- FANTASTIC SEMI-DETACHED COTTAGE • 2/3 BEDROOMS • 2/3 RECEPTION ROOMS • IMMACULATE INTERIOR • FABULOUS REAR GARDEN AREA • MODERN KITCHEN AND BATHROOM • GAS CENTRAL HEATING/DOUBLE GLAZING • EXTREMELY WELL PRESENTED INTERIOR • VIEWING AND ABSOLUTE MUST • AVAILABLE MID JUNE 2021

Description

** FANTASTIC SEMI-DETACHED COTTAGE WITH FANTASTIC REAR GARDEN SPACE **

What a fabulous property to rent! We are delighted to be able to offer to the rental market, this modern semi-detached cottage property with great sized accommodation and the addition of fantastic south facing rear garden for summer days in the sun.

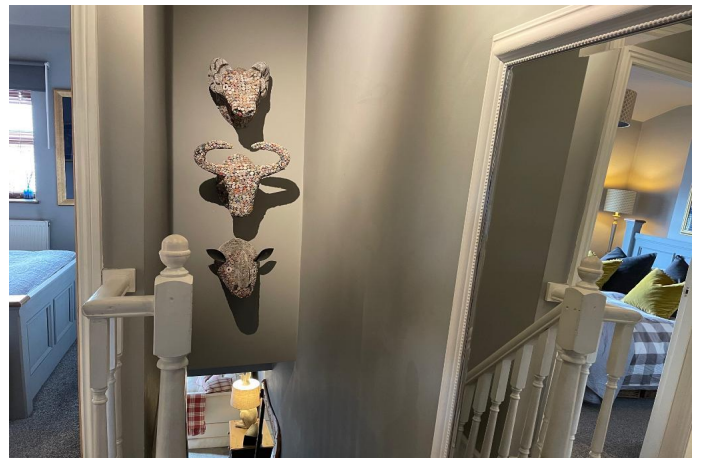
The internal does not disappoint either with great living accommodation and modern fixtures and fittings. The versatile accommodation can be utilised in various ways incorporating a third bedroom to the ground floor if required. Available to the ground floor are three reception rooms with patio doors leading to the gardens from two rooms and fully fitted modern kitchen. To the first floor, there are two double bedrooms and a modern family bathroom.

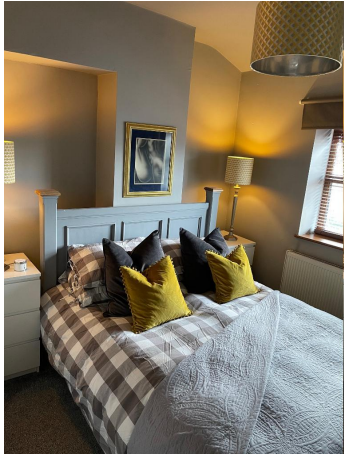
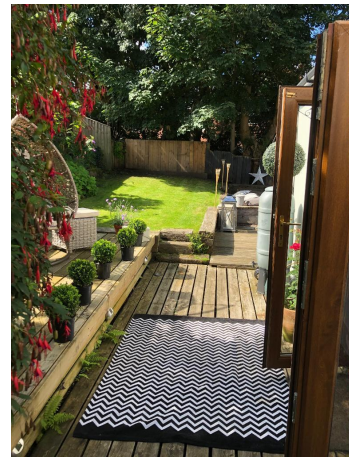
Close to all local amenities and within easy reach of local schools and motorway network for onward travel, the property will be available to view from the 11th June 2021.

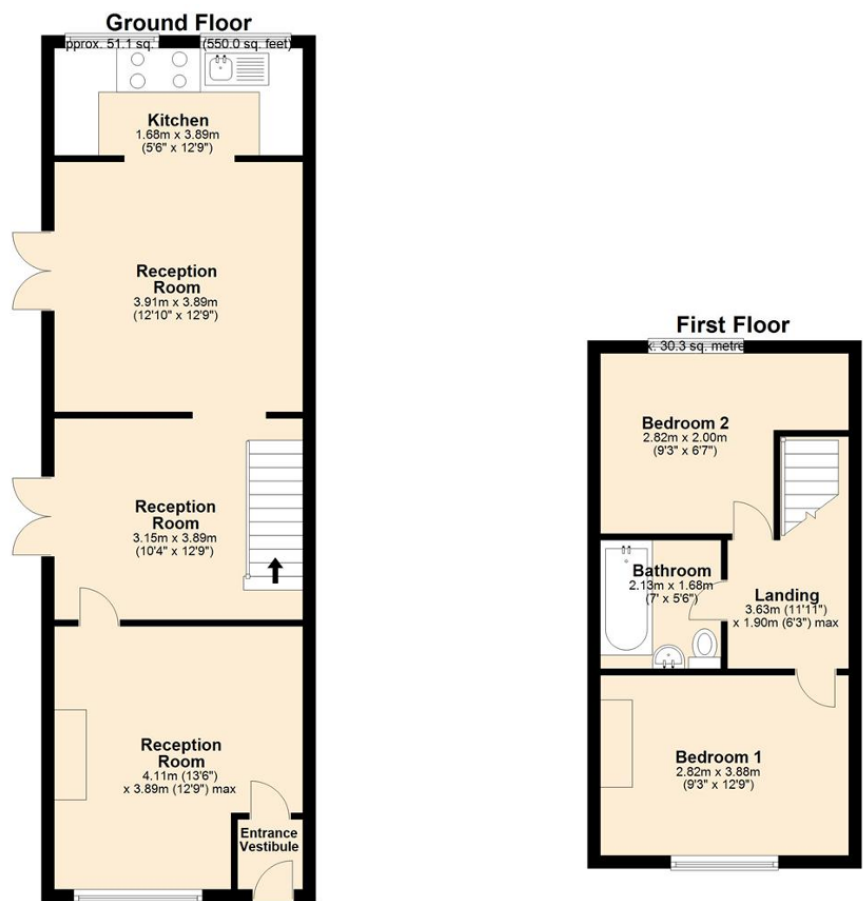
Water rates and included within the rental price.

We are currently registering interest to view. Should you wish to view the property, please contact our Tottington office on 01204 88 2368.









Total area: approx. 81.4 sq. metres (875.7 sq. feet)

All floorplans are for guidance only. Not to scale. Please check all dimensions and shapes before making any decisions reliant upon them.
Plan produced using PlanUp.

Energy Efficiency

