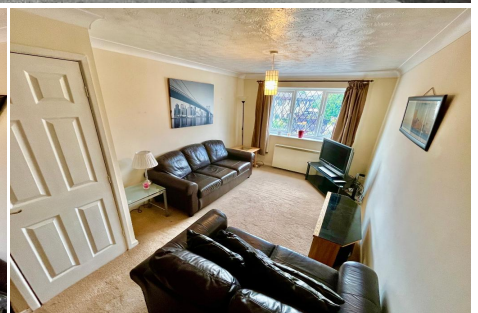


1 Bedroom Flat for Rent - £595 per month

Ashworth Court, Ashworth Street, Radcliffe, M26 2XZ



KEY FEATURES

- WELL PRESENTED FIRST FLOOR APARTMENT • FULLY FURNISHED • QUIET LOCATION • CONVENIENT FOR LOCAL AMENITIES • ONE DOUBLE BEDROOM • PRIVATE PARKING • WELL TENDED COMMUNAL GARDENS • WITHIN EASY REACH OF METROLINK • AVAILABLE FEBRUARY 2023

Description

*** A WELL PRESENTED AND FULLY FURNISHED FIRST FLOOR APARTMENT IN WELL MAINTAINED DEVELOPMENT ***

JH are delighted to offer for let this well presented first floor apartment located in a convenient location within easy reach of all local amenities including Radcliffe, Bolton and Bury town centres and the nearby metrolink.

Offered to the market fully furnished and benefiting from double glazing and electric storage heating, the accommodation on offer comprises of well kept communal gardens, entrance and hallways, hallway with laminate flooring, open plan living area with fully fitted kitchen, modern three piece bathroom suite and good sized double bedroom.

Outside, the property sits in a quiet cul-de-sac location with well kept communal gardens and private parking. THE PROPERTY IS OFFERED FULLY FURNISHED and is available for occupation from mid February 2023.

The property has an EPC rating of C.
Sorry, no pets are allowed at the development.

Please note: A holding deposit equivalent to one weeks rent is payable for the property (deducted from first months rent).



Energy Efficiency

Energy Efficiency Rating			
Score	Energy rating	Current	Potential
92+	A		
81-91	B		
69-80	C		76 C
55-68	D	68 D	
39-54	E		
21-38	F		
1-20	G		