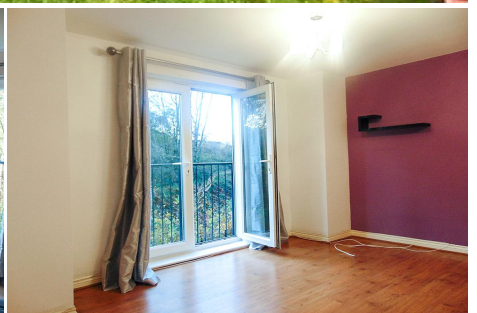


2 Bedroom Flat for Rent - £625 per month

Stonemere Drive, Radcliffe, Manchester, M26 1QY



KEY FEATURES

- WELL PRESENTED APARTMENT • FIRST FLOOR • TWO GOOD SIZED BEDROOMS • JULIETTE BALCONY TO LOUNGE • MODERN KITCHEN AND BATHROOM • OVERLOOKING GARDENS TO REAR • PRIVATE PARKING • POPULAR AND CONVENIENT LOCATION • AVAILABLE IMMEDIATELY • IDEAL FOR PROFESSIONAL SINGLE/COUPLE

Description

**** A MODERN FIRST FLOOR TWO BEDROOMED APARTMENT FINISHED TO A GOOD STANDARD THROUGHOUT ****

JH Sales and Lettings are delighted to receive instructions to let this well presented first floor modern apartment located on this popular development.

The apartment is ideally suited to a professional single or couple and is ideally located within easy reach of the motorway network and Manchester city centre.

The accommodation offers good sized entrance hallway with laminate flooring, lounge area with patio doors and juliette balcony overlooking the well kept communal gardens to rear, fully fitted modern kitchen with integral washing machine, oven, hob and extractor fan and fridge freezer, two good sized bedrooms and main modern white bathroom suite.

Outside, the property has a reserved parking space and well kept communal gardens. The property is warmed by electric heating and is fully double glazed throughout.

Available for immediate viewing. Please enquire at our offices for further details.

Energy Efficiency

Energy Efficiency Rating			
Score	Energy rating	Current	Potential
92+	A		
81-91	B		
69-80	C	74 C	73 C
55-68	D		
39-54	E		
21-38	F		
1-20	G		

