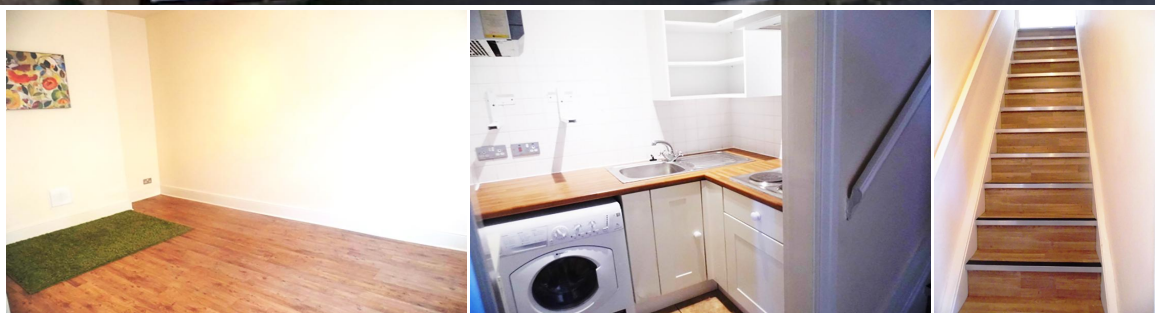


## 1 Bedroom End Terraced for Rent - £465 per month

Buchanan Street, Ramsbottom, Bury, Lancashire, BL0 9JF



### KEY FEATURES

- END STONE BUILT TERRACED PROPERTY
- WELL PRESENTED INTERIOR THROUGHOUT
- GAS CENTRAL HEATING
- DOUBLE GLAZING THROUGHOUT
- GOOD SIZED DOUBLE BEDROOM
- CLOSE TO RAMSBOTTOM CENTRE
- AVAILABLE FOR IMMEDIATE VIEWING

## Description

JH Sales and Lettings and delighted to offer for let this well presented stone built end terraced property located within walking distance of Ramsbottom village centre.

The accommodation, which is presented to a good standard throughout, benefits from gas fired central heating and double glazing.

Internally, the property offers good sized lounge, fitted kitchen, wooden flooring throughout, a staircase leads to first floor comprising of large double bedroom and a three piece modern bathroom suite comprising of shower cubicle, low flush w.c. and pedestal wash hand basin.

The property is available for immediate viewing and occupation.



## Energy Efficiency

Energy Efficiency Rating		
	Current	Potential
Very energy efficient - lower running costs		
(92-100) <b>A</b>		
(81-91) <b>B</b>		
(69-80) <b>C</b>		
(55-68) <b>D</b>		
(39-54) <b>E</b>		
(21-38) <b>F</b>		
(1-20) <b>G</b>		
Not energy efficient - higher running costs		
England, Scotland & Wales	EU Directive 2002/91/EC	

Environmental Impact (CO <sub>2</sub> ) Rating		
	Current	Potential
Very environmentally friendly - lower CO <sub>2</sub> emissions		
(92-100) <b>A</b>		
(81-91) <b>B</b>		
(69-80) <b>C</b>		
(55-68) <b>D</b>		
(39-54) <b>E</b>		
(21-38) <b>F</b>		
(1-20) <b>G</b>		
Not environmentally friendly - higher CO <sub>2</sub> emissions		
England, Scotland & Wales	EU Directive 2002/91/EC	