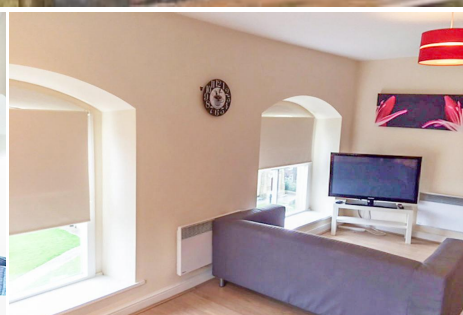
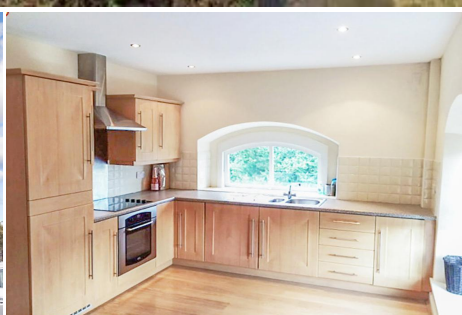


## 1 Bedroom Flat for Rent - £525 per month

Chapel Court Wesley Street, Tottington, Bury, BL8 3SD



### KEY FEATURES

- MODERN SECOND FLOOR APARTMENT • POPULAR DEVELOPMENT • OPEN PLAN LIVING ACCOMMODATION • FORMER CHURCH CONVERSION • MODERN KITCHEN AND BATHROOM • LOCATED IN THE HEART OF TOTTINGTON • ONE DOUBLE BEDROOM • SECURE PARKING FACILITIES • INTERCOM ENTRANCE • AVAILABLE MID END FEBRUARY 2022

## Description

**\*\* A MODERN SECOND FLOOR APARTMENT IN A POPULAR DEVELOPMENT IN THE HEART OF TOTTINGTON VILLAGE CENTRE.**

JH Sales and Lettings are delighted to offer for let this very well presented second floor apartment. Located in the heart of Tottington village centre and a former church conversion, the accommodation on offer comprises of entrance hallway, open plan lounge/modern fitted kitchen with two feature windows and laminate flooring, double bedroom with feature window and modern fitted bathroom.

The property is conveniently located for local amenities and travel to Bury town centre and Manchester City centre. Outside, the property has a secured car parking area and intercom entry system.

The property is available for immediate viewing and occupation from the end of February 2022. Please call our offices on 01204 88 2368.

Please note: A holding deposit equivalent to one weeks rent is payable for this property (deducted from first months rent). Please enquire for further details.

## Energy Efficiency

Energy Efficiency Rating			
Score	Energy rating	Current	Potential
92+	A		
81-91	B		
69-80	C		76   C
55-68	D	60   D	
39-54	E		
21-38	F		
1-20	G		

